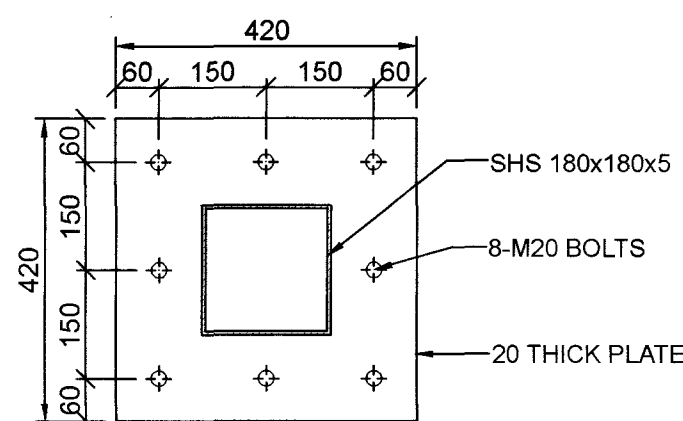
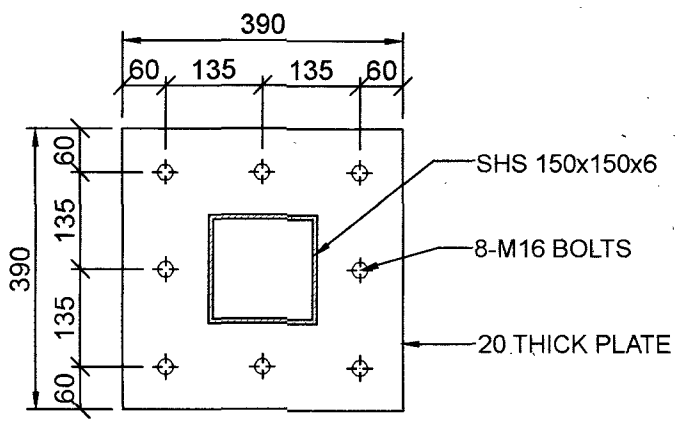


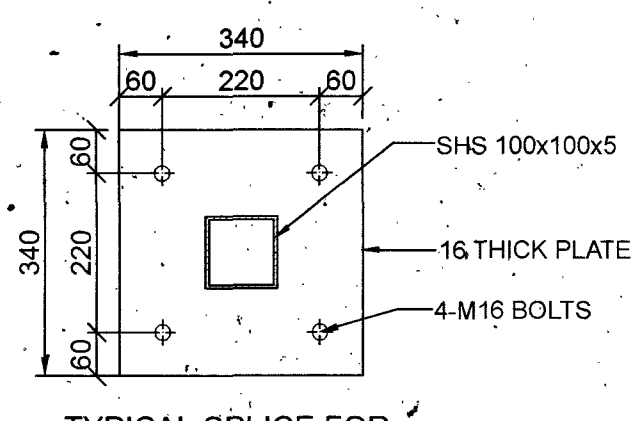
20.0M GATE TRUSS ELEVATION AT
REAR SIDE FRONT SIDE ALONG GRID 18



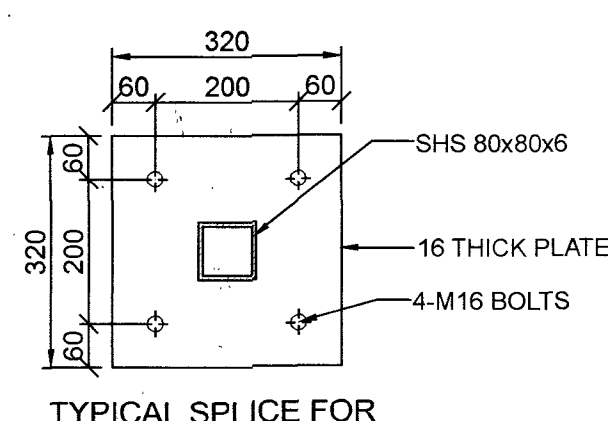
TYPICAL SPLICE FOR
SHS 180x180x5
SECTION I-I



TYPICAL SPLICE FOR
SHS 150x150x6



TYPICAL SPLICE FOR
SHS 100x100x5



TYPICAL SPLICE FOR
SHS 80x80x6

NOTES

1. ALL DIMENSIONS AND LEVELS GIVEN ARE IN MILLIMETERS UNLESS OTHERWISE SPECIFIED.
2. FIGURED DIMENSIONS ONLY SHALL BE FOLLOWED.
3. BOB= BOTTOM OF BEAM
TOB= TOP OF BEAM

DATE	DESCRIPTION	SIGN
REVISIONS		

VETTED BY

ALL DETAILS HAVE BEEN THOROUGHLY CHECKED AND ARE IN COMPLIANCE TO STANDARDS, CODES, REGULATIONS IN RESPECT OF SAFETY, SOUNDNESS AND ECONOMY.

[Signature]

PROVN OF HANGAR AND
ANNEXE BUILDING AT
INS DEGA VISAKHAPATNAM

20.0M GATE TRUSS ELEVATION AT
REAR SIDE FRONT SIDE ALONG GRID 18

SHT NO.	S27	HELIOS ENGINEERING CONSULTANTS #38-34-66 FCI COLONY MARRIPALEM VISAKHAPATNAM - 530018
PRO NO.	ST2204	
SCALE.	AS NOTED	
DRN BY.	KSS	
DATE.	28-02-2023	

DESIGNED BY

[Signature]
DV TRINADH RAO

CHECKED BY

[Signature]
S SURYA
MS (STRUCTURES)

**CHIEF ENGINEER
(NAVY)
VISAKHAPATNAM**

REF.DRG.NO : CEVZ/2022/WD-2120(S) Sht.No.27/40

DESIGNS & DRAWINGS PREPARED UNDER CONSULTANCY FROM M/S HELIOS ENGINEERING CONSULTANTS AND VETTED BY ANDHRA UNIVERSITY

[Signature]

Kenshi Raman
S.D.(Design)
for Chief Engineer

[Signature]

Srinivas Nalla, DSE
CE (NF)
Director (Design)
for Chief Engineer